



# DROUGHT POLICY CONVERSATION

Efforts in the City of Mt Shasta

# Discussion Points

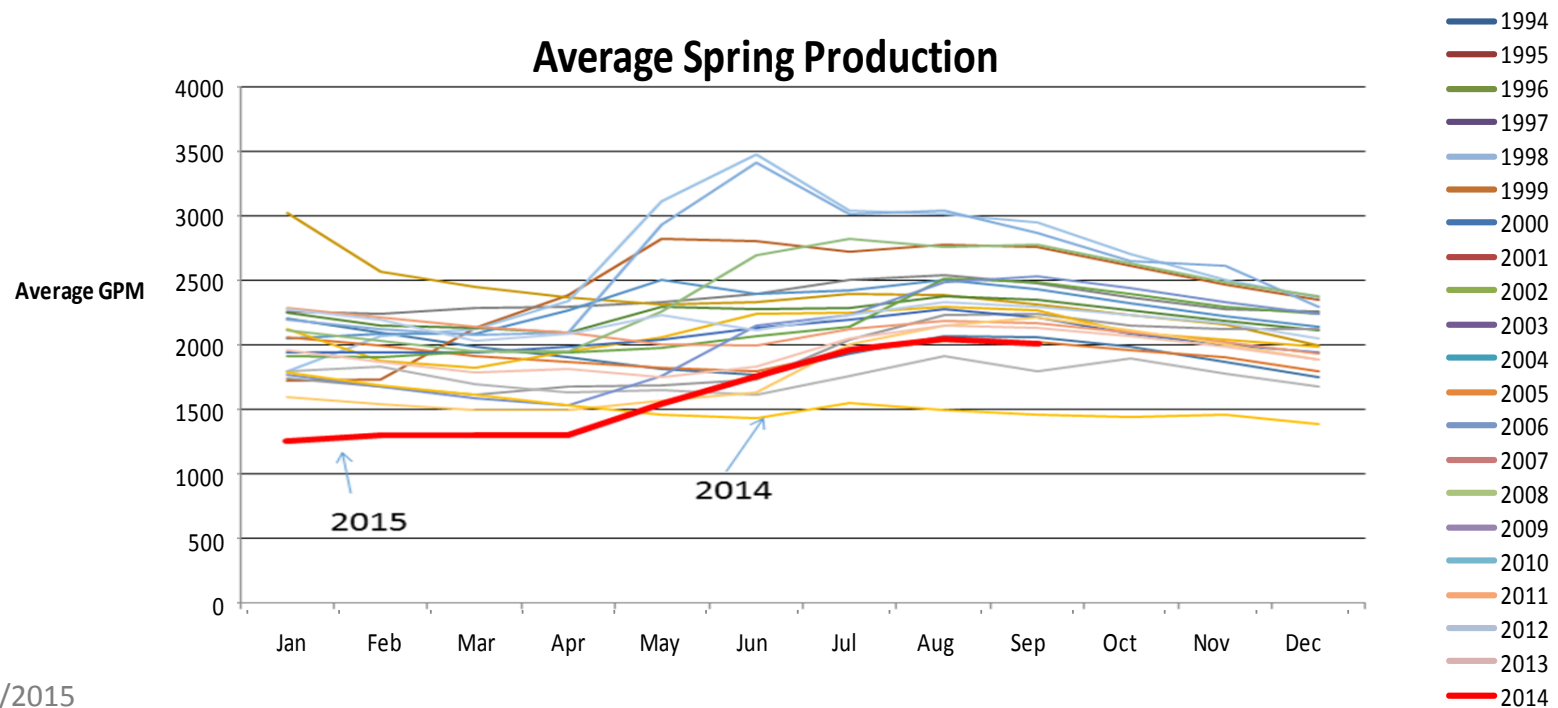
---

- Update on 2015 Spring Production
- Review 2014 & 2015 Drought Initiatives
- Analyze the Impact
- Discuss Next Steps

# Mt Shasta & The Drought



- Cold Springs is City's primary water source
  - Spring output varies between 1,450 & 3,000+ GPM
  - In 2014, the spring reached a 20-year low



# Historical Water Demands

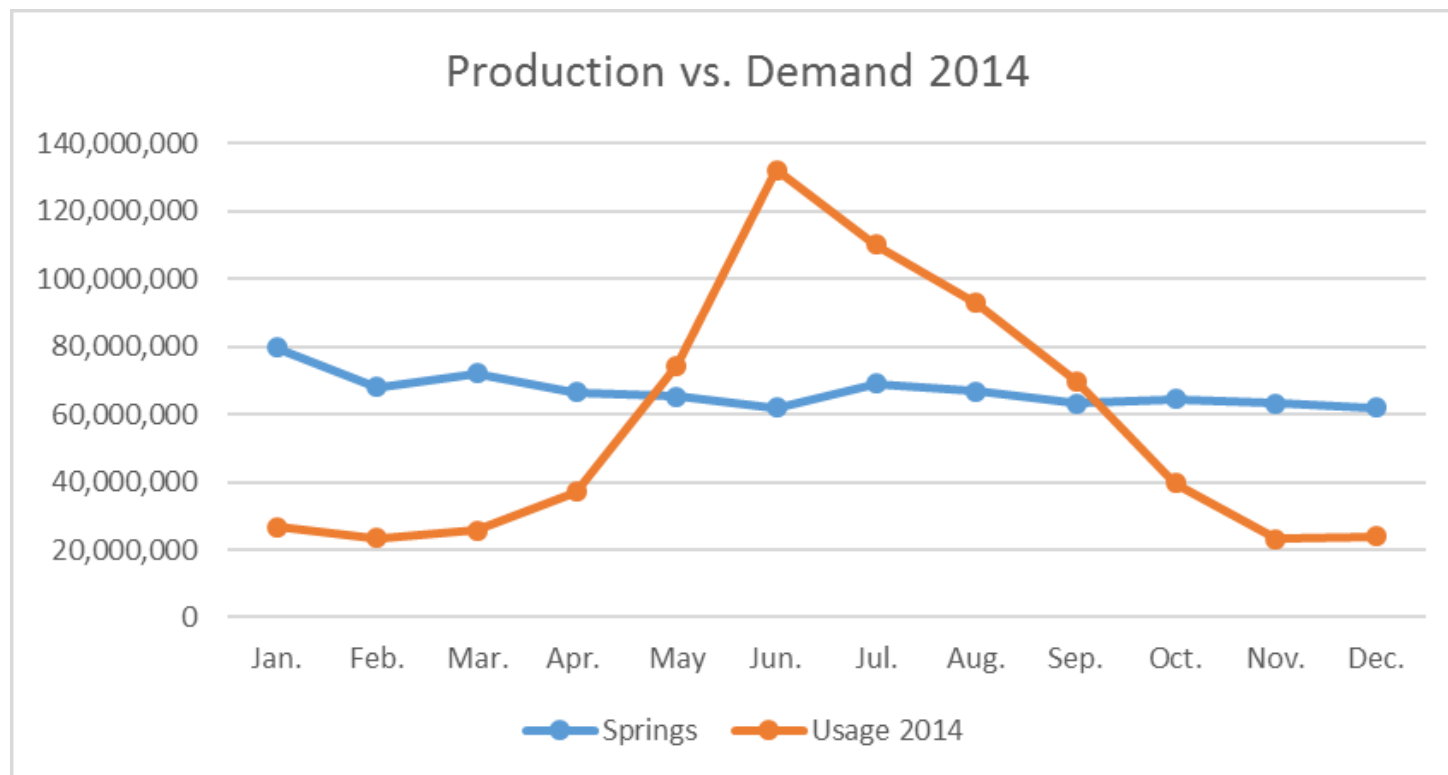
- Average Usage per Person: 936 GPD
  - Max Daily Demand: 3.8 MGD
  - Max Daily Production (low spring periods): 3.7 MGD
  - To keep up with 2014 demand shown in the graph, the city pumped 93m gallons of water from two wells



# '14 Production vs Demand



- In 2014, demand was significantly above spring production in June, July, and August.



# 2014 Drought Initiatives

- 20% Voluntary Reduction in Water Use

**CITY OF MT. SHASTA**  
**Water Department**

Excessive outside water use reduces the City's water storage reserves. We are asking water users to observe the following conservation tips:

- DO NOT** allow water to run in the gutter.
- Do not water during the heat of the day. Set timers for early morning hours.
- Do not water one spot for more than 30 minutes. Use timers if possible.
- Hoses should be fitted with sprinklers or nozzles.
- Consult with a landscape specialist to learn about maintenance techniques & how to improve the health of your lawn by using less water.
- Water plants & lawn, not paved areas.
- Make sure hoses & faucets do not leak and connections are tight.
- Do not water out of habit, check dampness of soil.
- Please do your part. In the past, our community has responded to requests for conservation by reducing water consumption by as much as 50%.
- PLEASE DO YOUR PART.** The City is requesting a voluntary 20% reduction in consumption in response to Governor Brown's January 1, 2014 Drought Proclamation.
- For more information on water conservation go to: [www.saveourh2o.org](http://www.saveourh2o.org)

If you have questions or if we can be of assistance, call our office at 926-7510.

- Stopped watering in strategic areas
  - Sisson Fields
  - Schools



# 2014 Conceptual Projects

---



- DWR Grant: \$4.3 million
  - Supply Line: \$1.7 million
  - Water meters: \$2.6 million
  - Education:
    - Water Talks Water Conservation Workshops
    - Mailer, “Get to Know Your Water Supply”
- Spring Hill Well and Water Tower: ~\$4 million project

# 2015 Drought Projects

---

- DWR Grant: \$4.3 million
  - Supply Line: \$1.7 million
  - Water meters: \$2.6 million
  - Education:
    - Water Talks Water Conservation Workshops
    - Mailer, “Get to Know Your Water Supply”
- Passed Resolution CCR-15-27, Emergency Drought Conditions Water Reduction Policy
- Implemented internal city policies for staff, such as...
  - Flushed hydrants only when necessary to maintain water quality
  - Filled fire trucks at hydrant locations to achieve flushing goals

*All projects  
to be completed  
by November 2015*



# Status of Supply Line

---

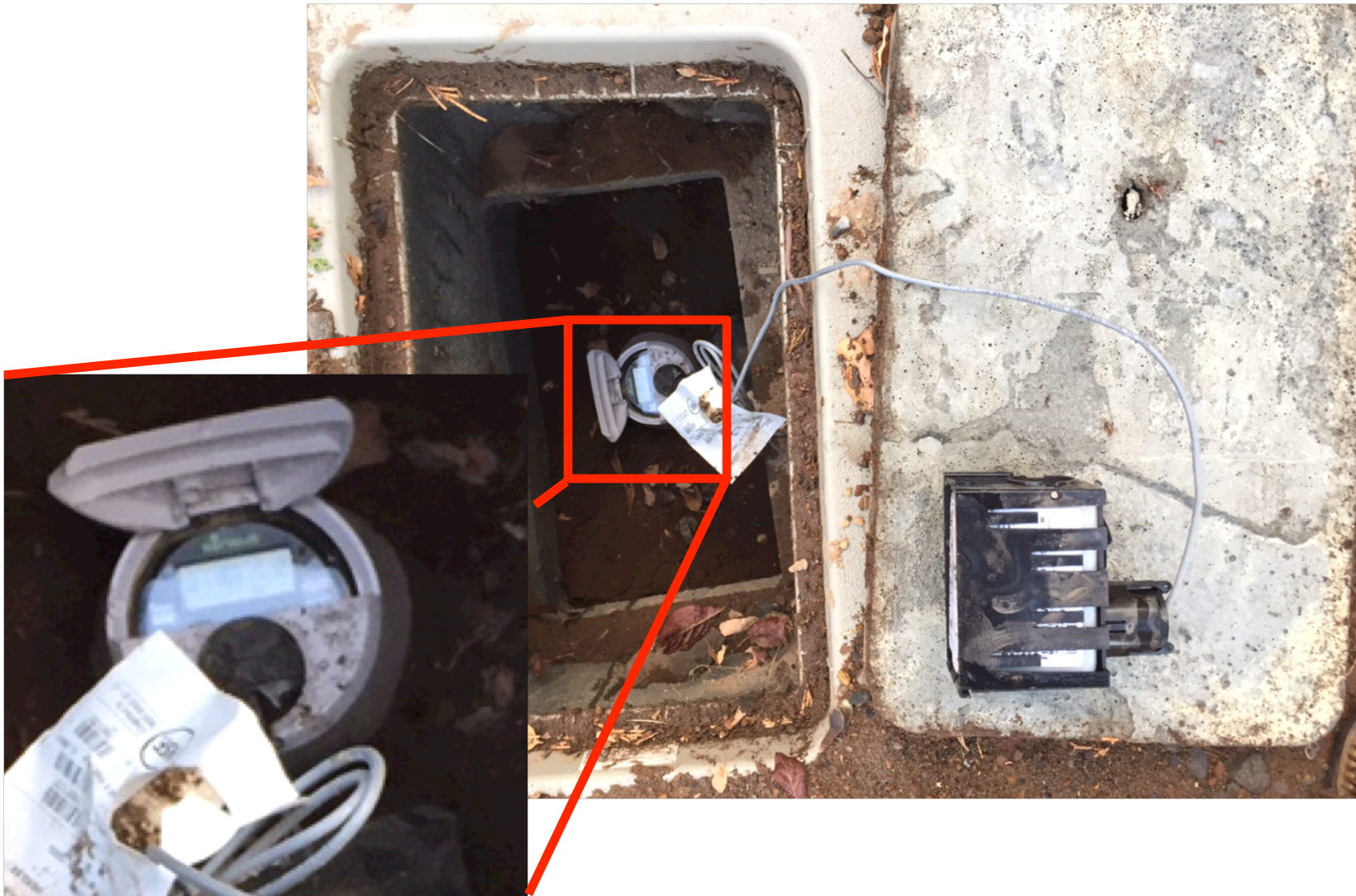
- Supply Line Project
  - All work is complete with the exception of the Quail Hill parallel line installation.
  - Hope to complete the short section on Quail Hill this year.

# Status of Water Meters

---

- Water Meters –
  - Installations are complete;
  - Implementing the AMR hardware and software;
  - Currently accepting requests for opt-out program;
  - Preparing new utility bills which will include water usage data;
  - Undertaking a water rate study this winter;
  - Will implement new rates based on utilization by next fall.

# Water Meters (continued)



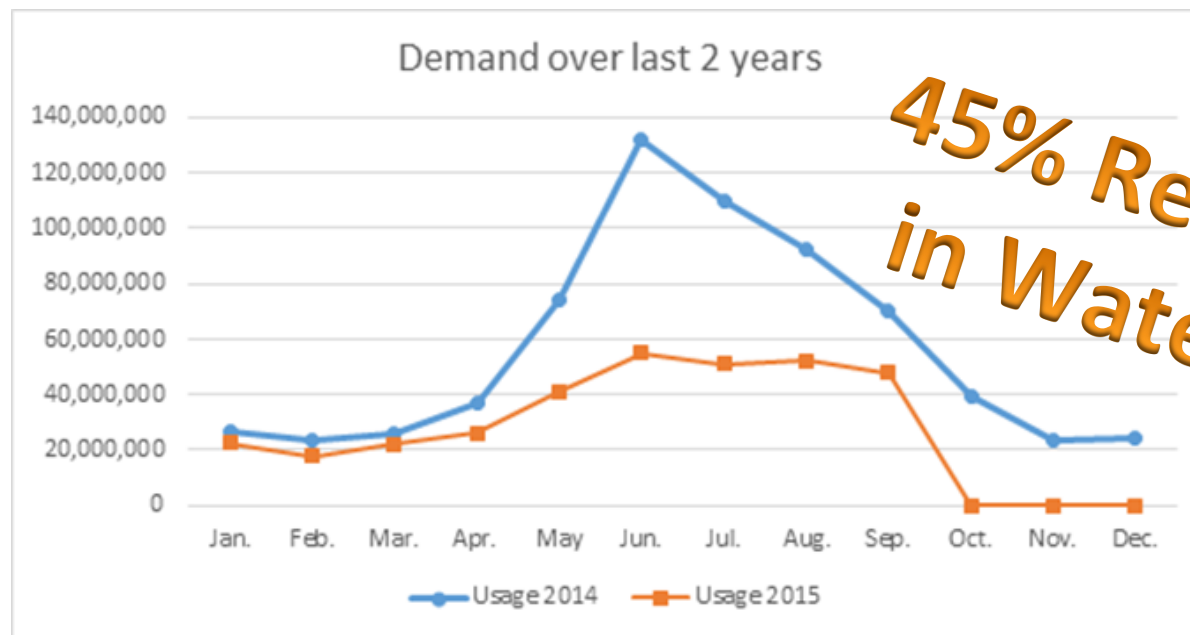
# Resolution CCR-15-27

---

- Emergency Drought Conditions Water Reduction Policy
  - Outdoor watering
    - Permitted between 8:00 pm to 8:00 am only.
    - Watering with sprinklers is restricted to three (3) days per week.
      - Addresses ending in odd numbers may water Monday, Wednesday, and Friday only.
      - Addresses ending in even numbers may water Tuesday, Thursday, and Sunday only.
    - Watering with sprinklers is limited to:
      - Shower/fixed sprinklers: 15 min/station
      - Rotary sprinklers: 30 min/station
      - Drip systems: 45 min/station
      - Watering of vegetable gardens may be augmented by hand watering using hoses with trigger nozzles subject to above day and time requirements.
      - Do not water paved areas or avoid unnecessary overspray.
  - Cut grass to maximum height.
  - Leaks must be repaired immediately.
  - Only wash cars when using a hose with a self-closing water shut-off nozzle.
  - Only serve water at restaurants when asked.
  - To report excessive watering in your neighborhood, please call our Police Non-Emergency number at (530) 926-7540

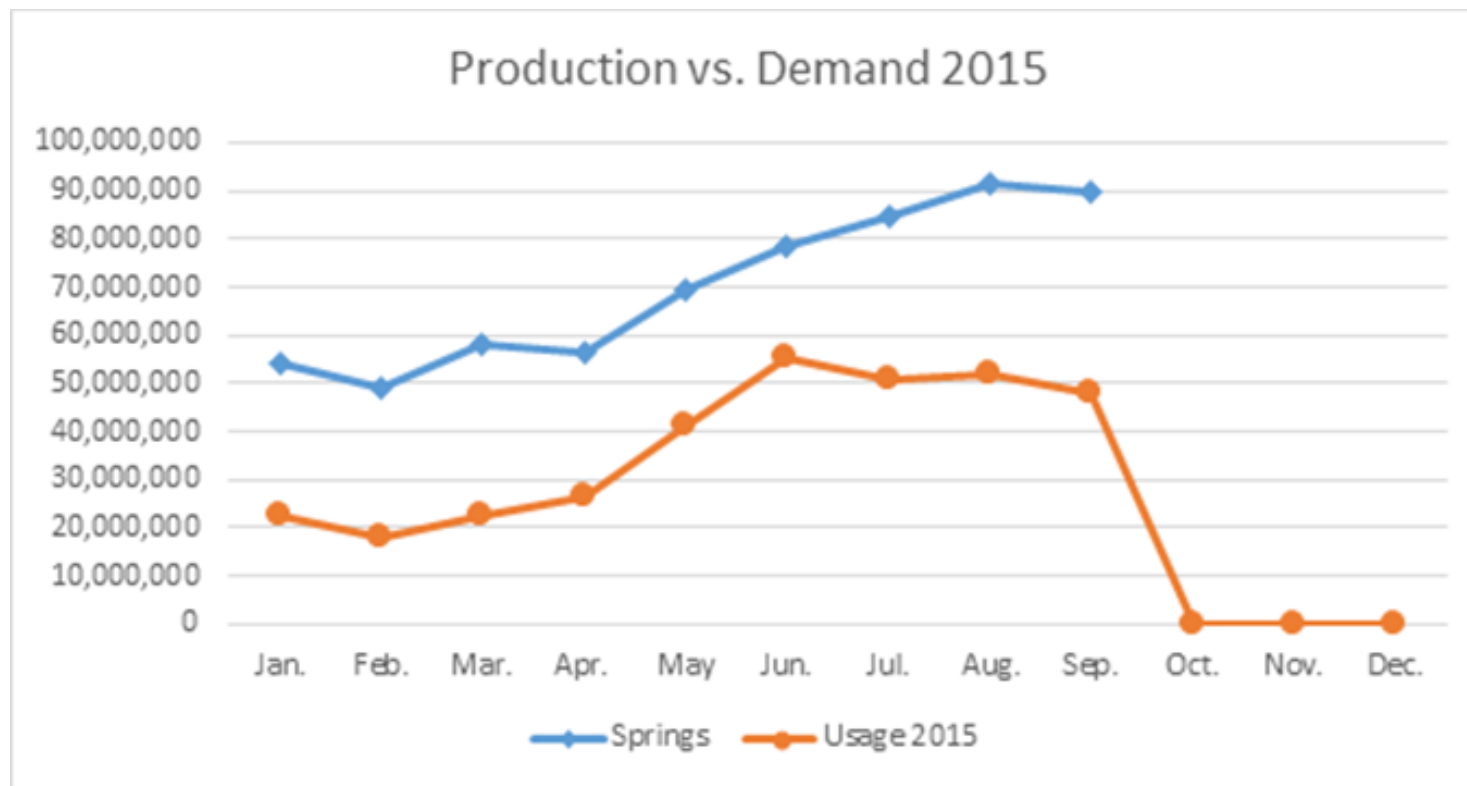
# Impact on 2015 Usage

- The city has reduce usage by 45% from 2014 to 2015!!!
  - Well below the governor's mandate of a 25% reduction
  - Water meters, the city's drought resolution, intense public education, and statewide publicity all had an impact.



# '15 Production vs Demand

- In 2015, the City has not had to supplement spring production.



# Going Forward...

---

- Water Meters:
  - Allow citizens to monitor and regulate their water usage;
  - Use information to engage citizens in water usage and infrastructure discussions;
  - Implement new water rates.
- State Initiatives:
  - Continue to comply with state-wide mandates...
    - The City's Drought Resolution is still in effect.





## **Comments & Questions**

Geoff Harkness  
Mayor, City of Mt Shasta  
[gharkness@mtshastaca.gov](mailto:gharkness@mtshastaca.gov)