



How the City Water Infrastructure Works

Topics of Discussion

- City's Water Demand
- Sources of Supply & Delivery Infrastructure
- Efforts to the Address the Drought-Conservation, SCADA and Meters

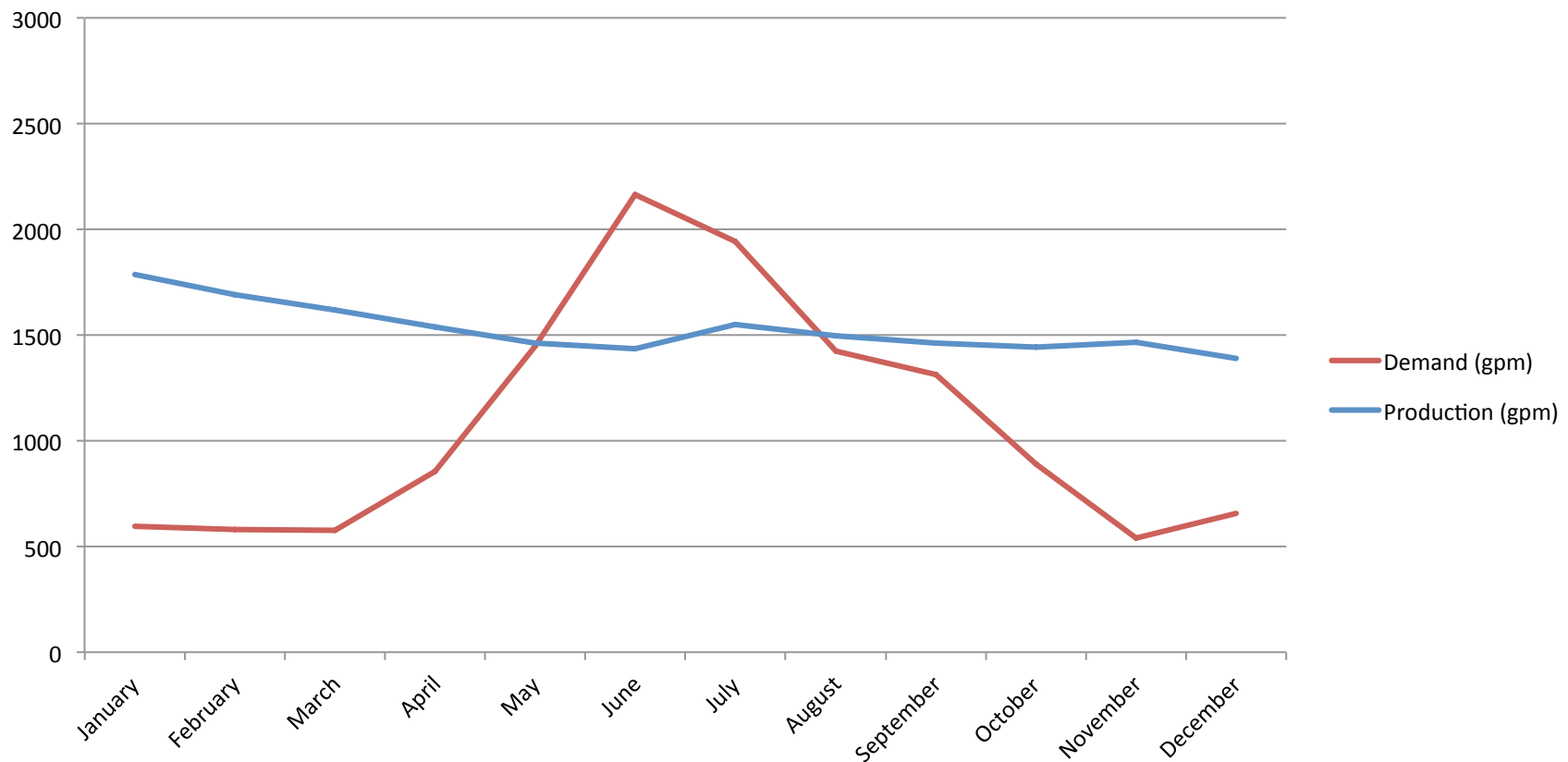
Water Demands

- Usage per Person:
 - 936 gpd (peak month-July 2013)
 - 3-400 gpd (avg.)
- May-September 2014:
 - Springs Produced 327 MG
 - Used 386 MG
- Total 2014 Production: 803 MG
- Total 2014 Usage: 586 MG

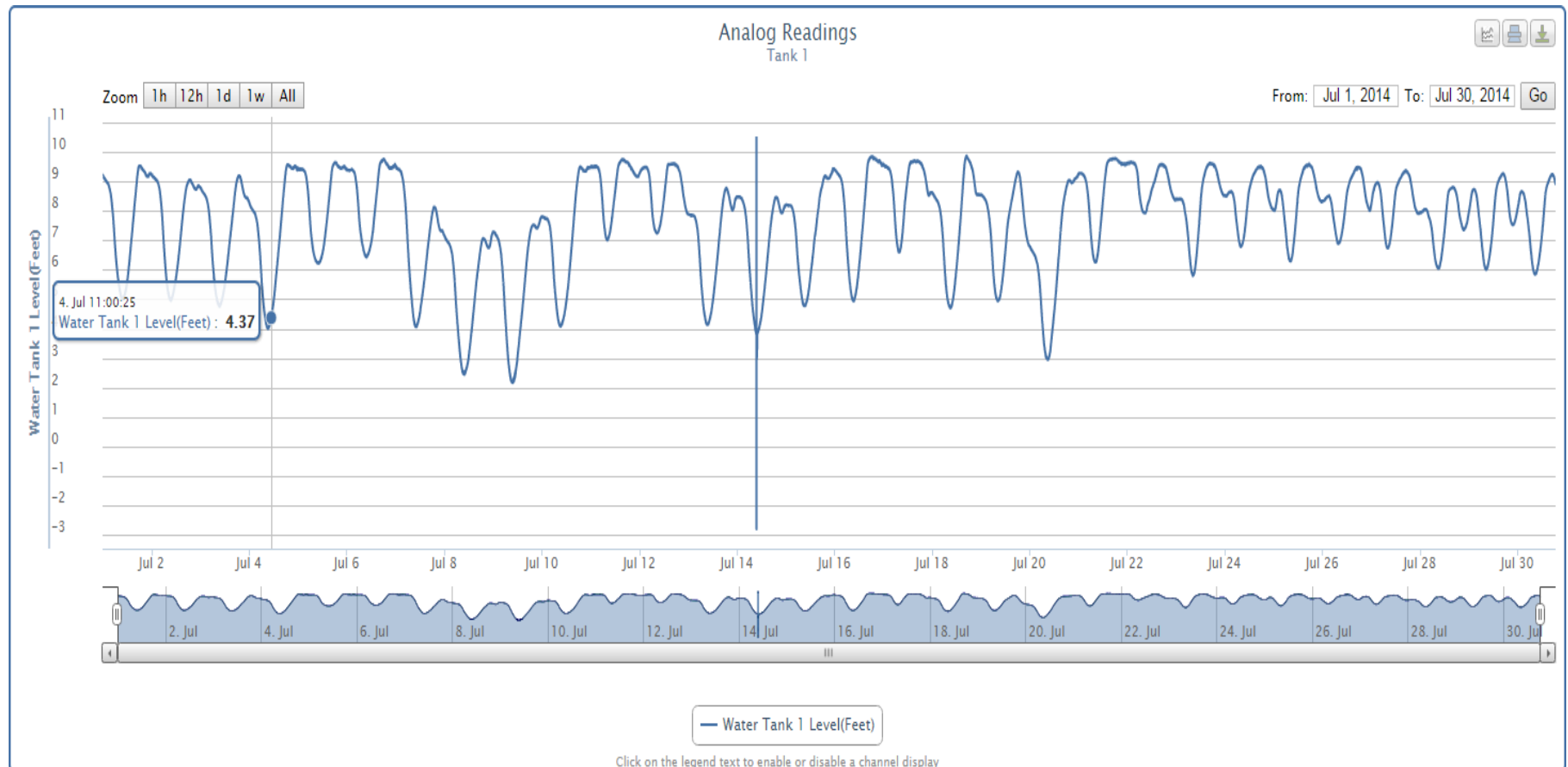
Water Demands



2014

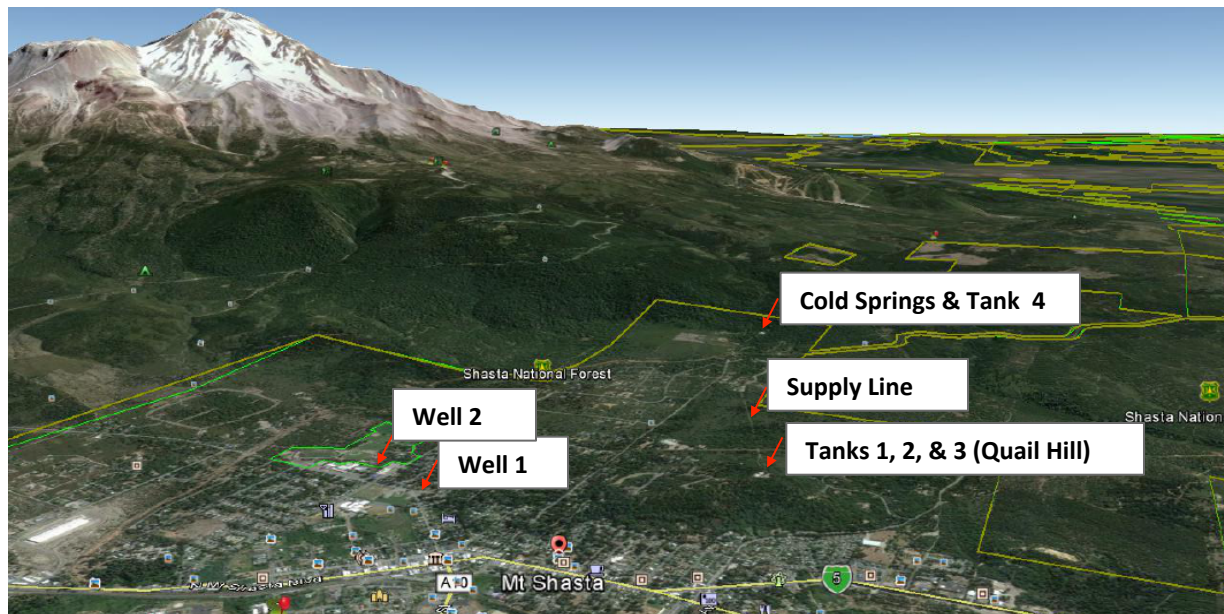


Water Demands



Supply & Infrastructure

- 4 Storage Tanks-1.7 MG
- Supply Line
- Distribution Pipes-35 miles-1,800 connections / 3,600 Residents
- 3 Pressure Zones
- 2 Wells

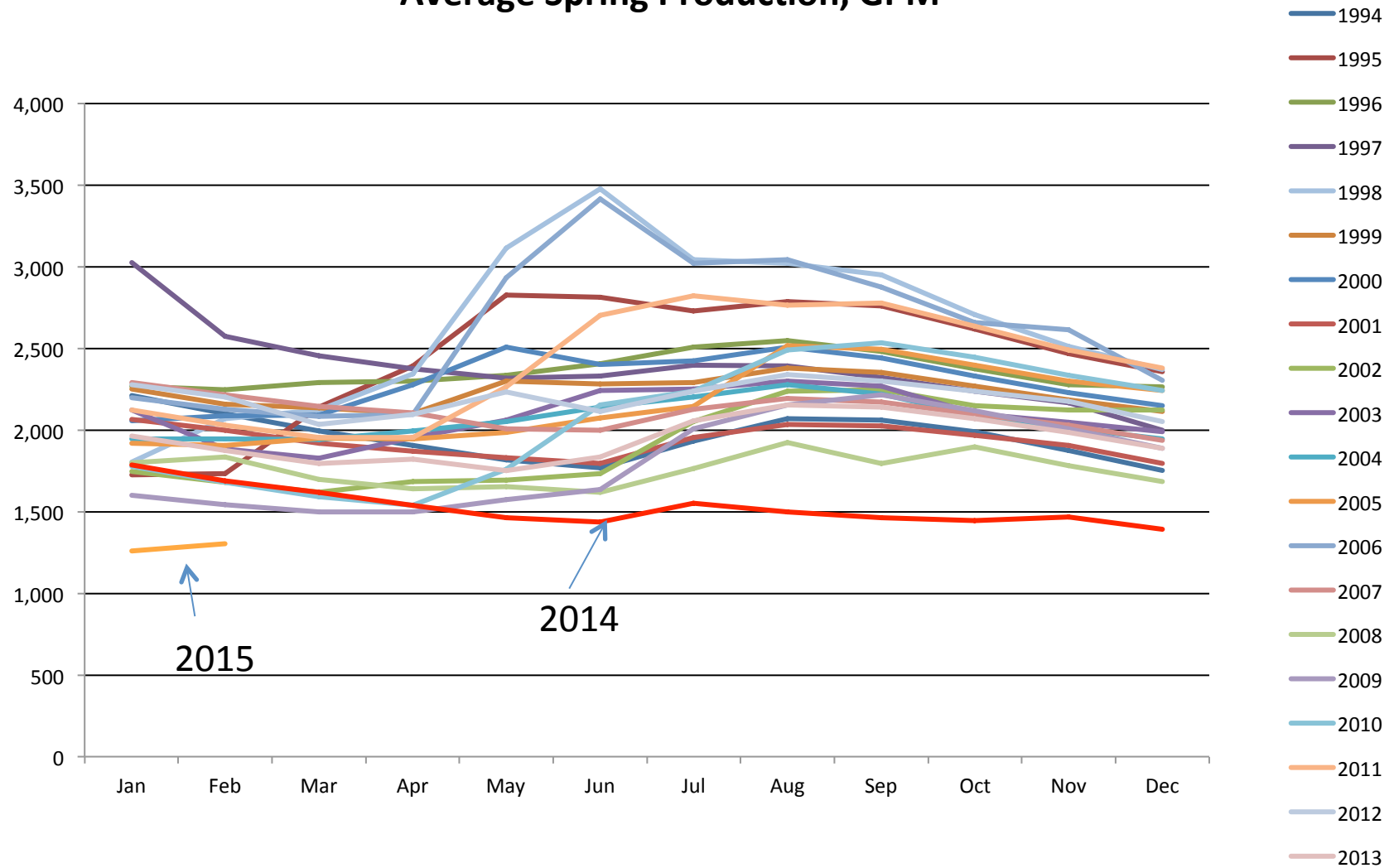


Supply & Infrastructure



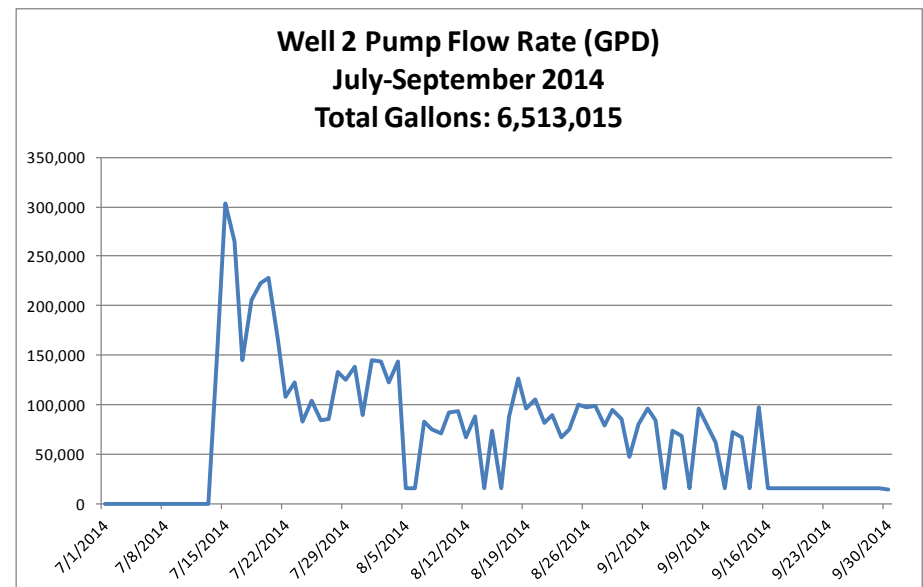
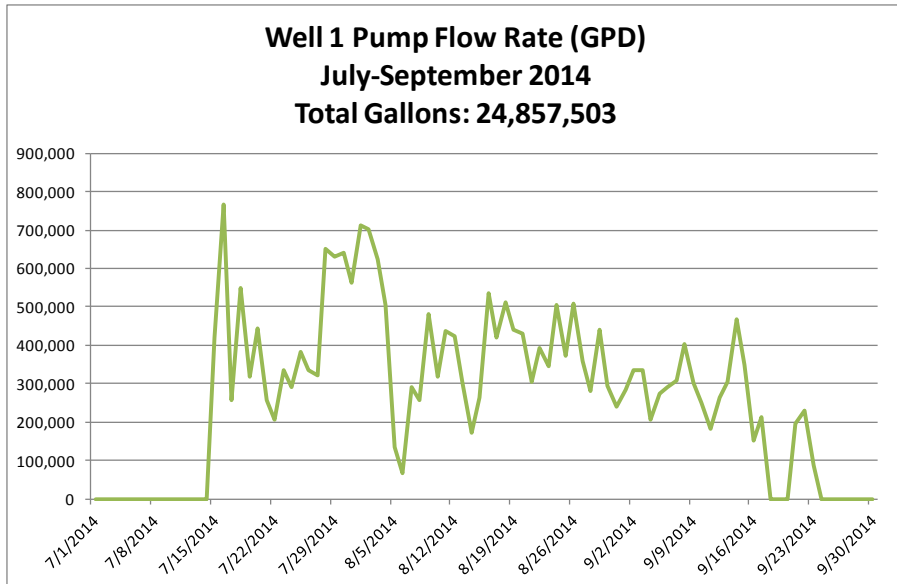
- Cold Springs is the primary water source
 - Separate from Big Springs at City Park
 - Exclusive rights since 1884 (25% went to Roseburg)
 - Spring output varies between 1,450 & 3,000+ GPM
 - Approximately 1.6 years old (USGS)

Average Spring Production, GPM



Supply & Infrastructure

- Two wells supplement summer demand.
 - 93 million gallons pumped in 2014



Conservation Efforts

- 20% Voluntary Reduction in Water Use

CITY OF MT. SHASTA
Water Department

Excessive outside water use reduces the City's water storage reserves. We are asking water users to observe the following conservation tips:

- DO NOT** allow water to run in the gutter.
- Do not water during the heat of the day. Set timers for early morning hours.
- Do not water one spot for more than 30 minutes. Use timers if possible.
- Hoses should be fitted with sprinklers or nozzles.
- Consult with a landscape specialist to learn about maintenance techniques & how to improve the health of your lawn by using less water.
- Water plants & lawn, not paved areas.
- Make sure hoses & faucets do not leak and connections are tight.
- Do not water out of habit, check dampness of soil.
- Please do your part. In the past, our community has responded to requests for conservation by reducing water consumption by as much as 50%.
- PLEASE DO YOUR PART.** The City is requesting a voluntary 20% reduction in consumption in response to Governor Brown's January 1, 2014 Drought Proclamation.
- For more information on water conservation go to: www.saveourh20.org

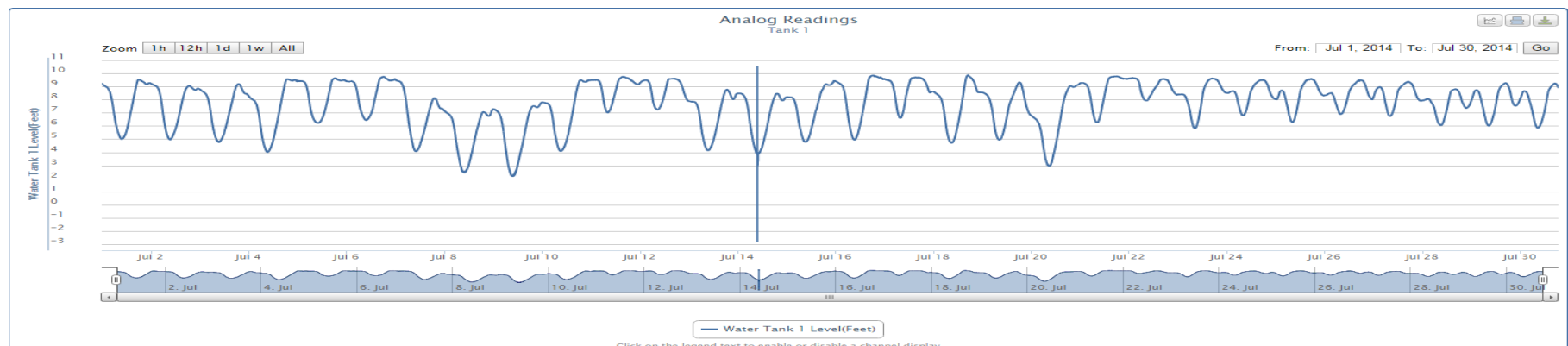
If you have questions or if we can be of assistance, call our office at 926-7510.

- Stopped watering in strategic areas
 - Sisson Fields
 - Schools



Conservation Efforts

- SCADA Telemetry
 - Remotely monitor tank levels, usage, production
 - Automatically turns wells on/off
 - Alarms
 - Data
 - Efficiency-wells only kick on when needed and don't overfill tanks



Conservation Efforts

- Benefits to Metering Water:
- You can't manage what you don't measure
 - Charging based on usage leads to:
 - Conservation-20-30%
 - Equity
 - Revenues more closely align with consumption
 - Establishes water consumption data that can be used to manage, operate, and maintain the infrastructure-more meaningful and effective planning.
 - Identifies leaks/quantifies “unaccounted for” water (water loss)



Comments & Questions

- Rod Bryan
- Public Works Director, City of Mt Shasta
 - rbryan@mtshastaca.gov